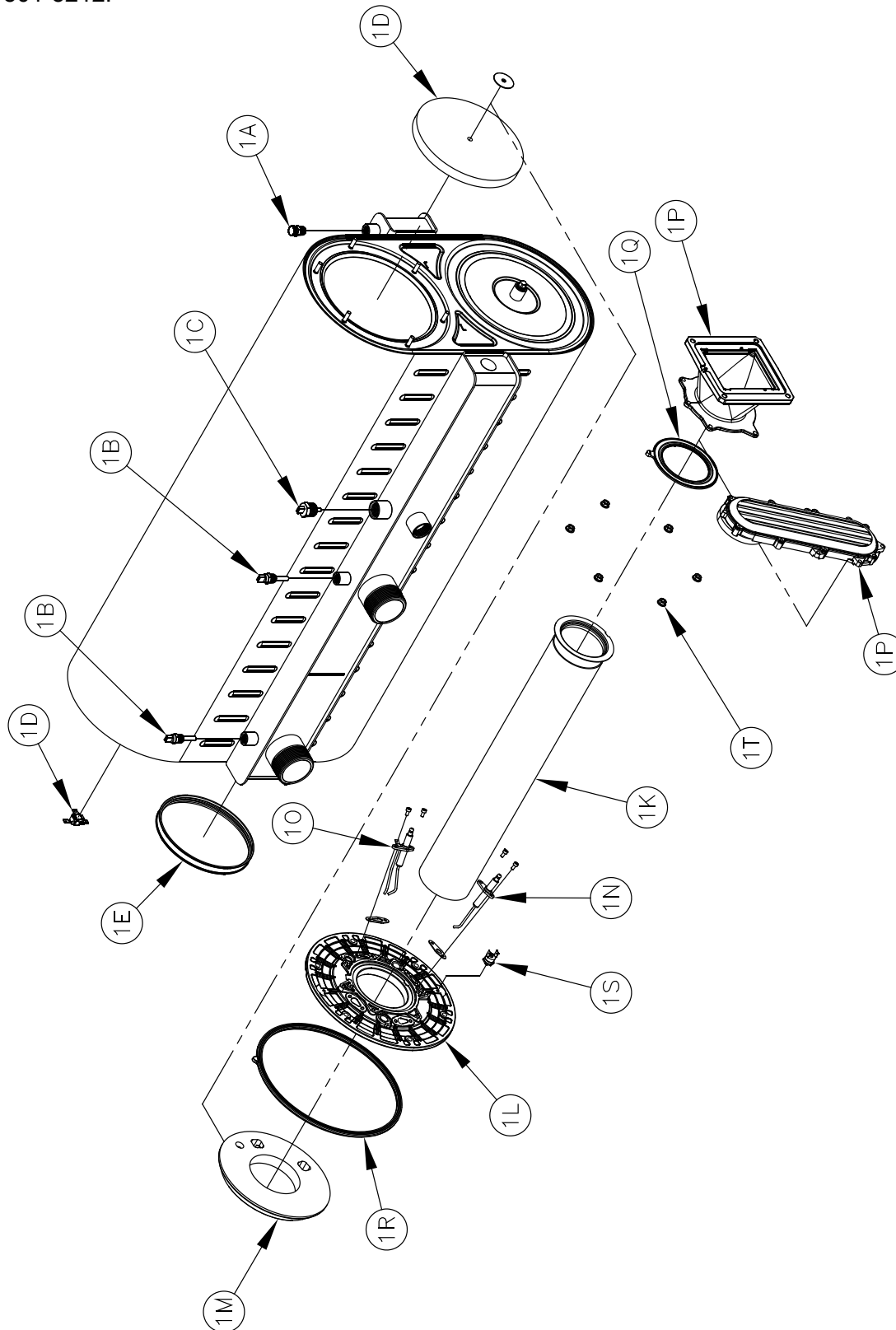


### XIII. Repair Parts

All Alpine Repair Parts may be obtained through your local authorized U.S. Boiler Company representatives or outlets. Should you require assistance in locating a U.S. Boiler Company representative or outlet in your area, or have questions regarding the availability of U.S. Boiler Company products or repair parts, please contact U.S. Boiler Company Customer Service at (717) 239-7642 or Fax (877) 501-5212.

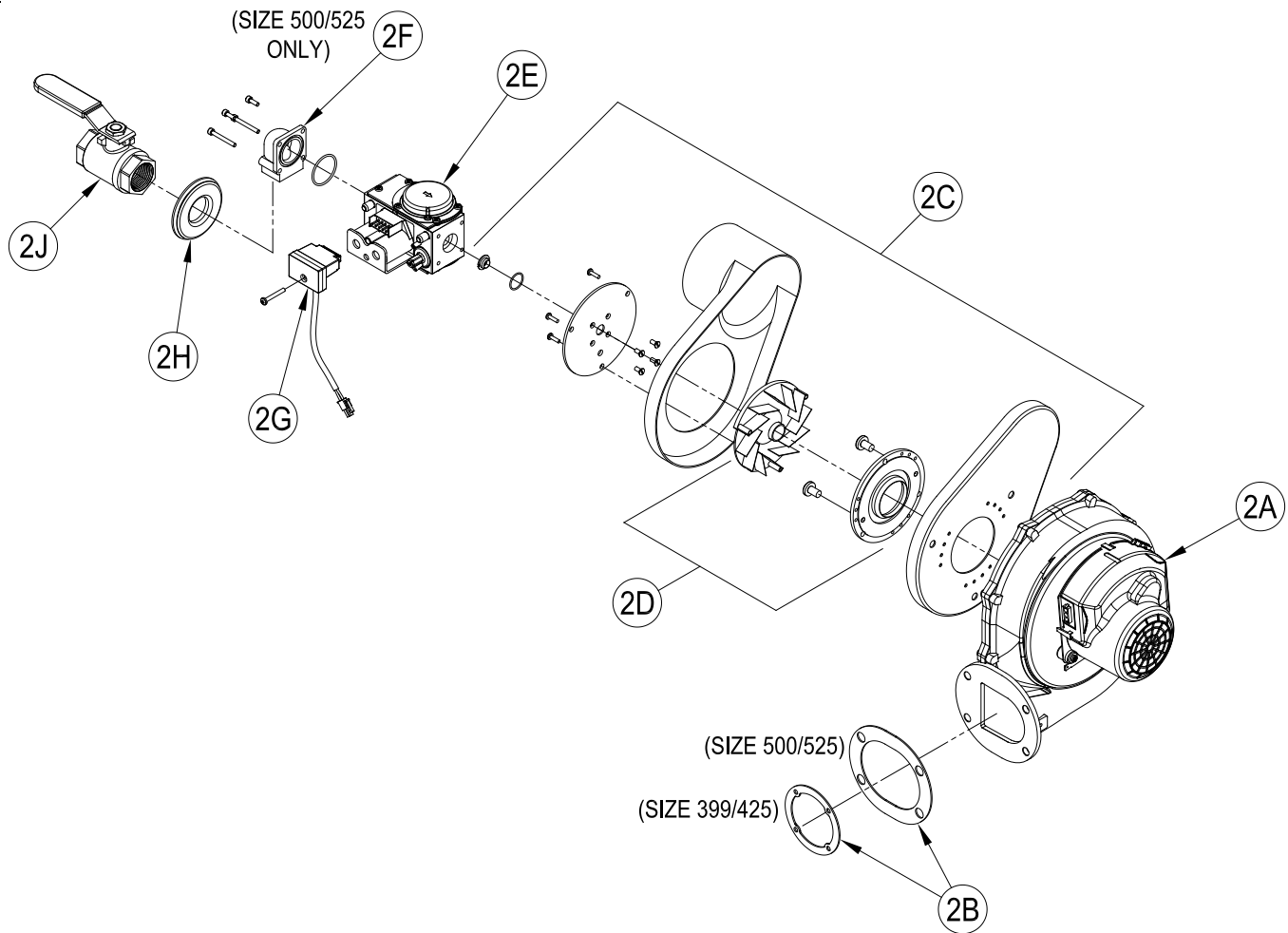


### XIII. Repair Parts (continued)

Heat Exchanger Components						
Key No.	Description	Part Number				
		ALP399	ALP500	ALP600	ALP700	ALP800
1A	Air Vent Valve	101586-01				
1B	Supply/Return Water Temperature Sensor (2 per boiler)	101685-01				
1C	High Limit Water Temperature Sensor	101653-01				
1D	Replacement Rear Insulation Disc and Thermal Link Switch Kit (includes insulation disc, thermal link switch and instructions)	104998-01				
1E	Flue Exit Gasket Replacement Kit (includes gasket and dielectric grease)	104501-01		104502-01		
1G	Temperature and Pressure Gauge (not shown)	100282-01		103470-02		
1H	Safety Relief Valve (not shown)	50 PSI: 103837-01		60 PSI: 81660375		
	Alternate Safety Relief Valve Kit (not shown, includes safety relief valve and temperature and pressure gage)	80 PSI: 104200-01 100 PSI: 104201-01				
1J	Boiler Drain Valve, 3/4 in. NPT (not shown)	806603061				

Burner Components						
Key No.	Description	Part Number				
		ALP399	ALP500	ALP600	ALP700	ALP800
1K	Replacement Burner Kit (includes burner, burner head seal and hardware)	104988-01	104989-01	104990-01		104991-01
1L	Replacement Burner Door Kit (includes door, burner door inner and outer seals, gaskets for sensor and ignitor, insulation and thermostat; does not include igniter or flame sensor)	104992-01		104993-01		
1M	Burner Door Insulation (Warning: Contains RCF)	101728-01		103610-01		
1N	Replacement Flame Sensor Kit (includes gasket and hardware)	103339-01		103310-01		
1O	Replacement Igniter Kit (includes gasket and hardware)	103005-01	103005-02	103308-01		
1P	Replacement Gas/Air Duct Kit (includes duct gaskets and hardware)	104994-01	104995-01	104996-01		
1Q	Burner Gasket	102739-01		104986-01		
1R	Burner Door Outer Seal	101730-01		104985-01		
1S	Burner Door Thermostat with Manual Reset	104569-01				
1T	Burner Door Hex Flange Nut, M6 x 1.0 mm (6 per boiler)	101724-01				

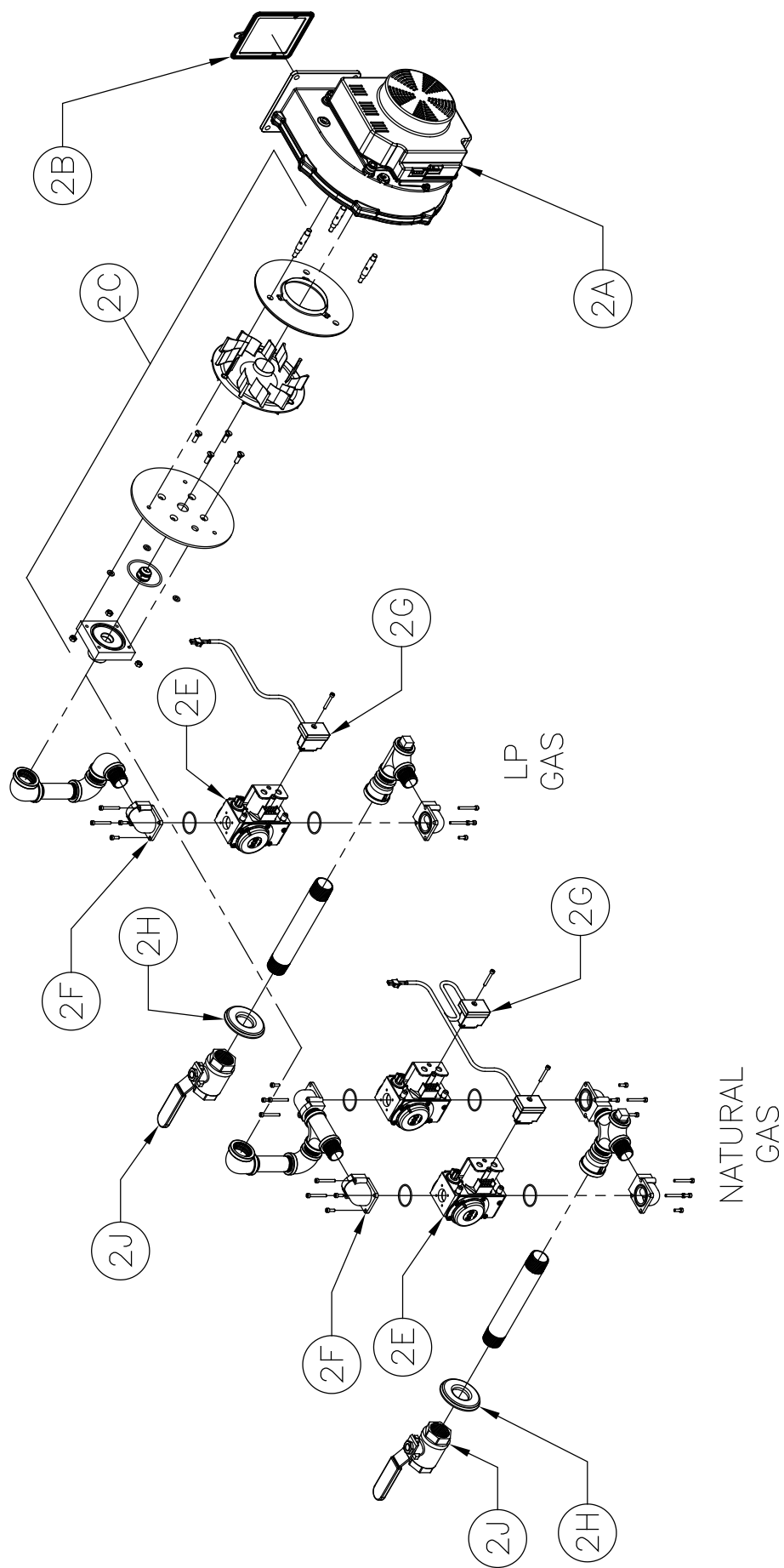
### XIII. Repair Parts (continued)



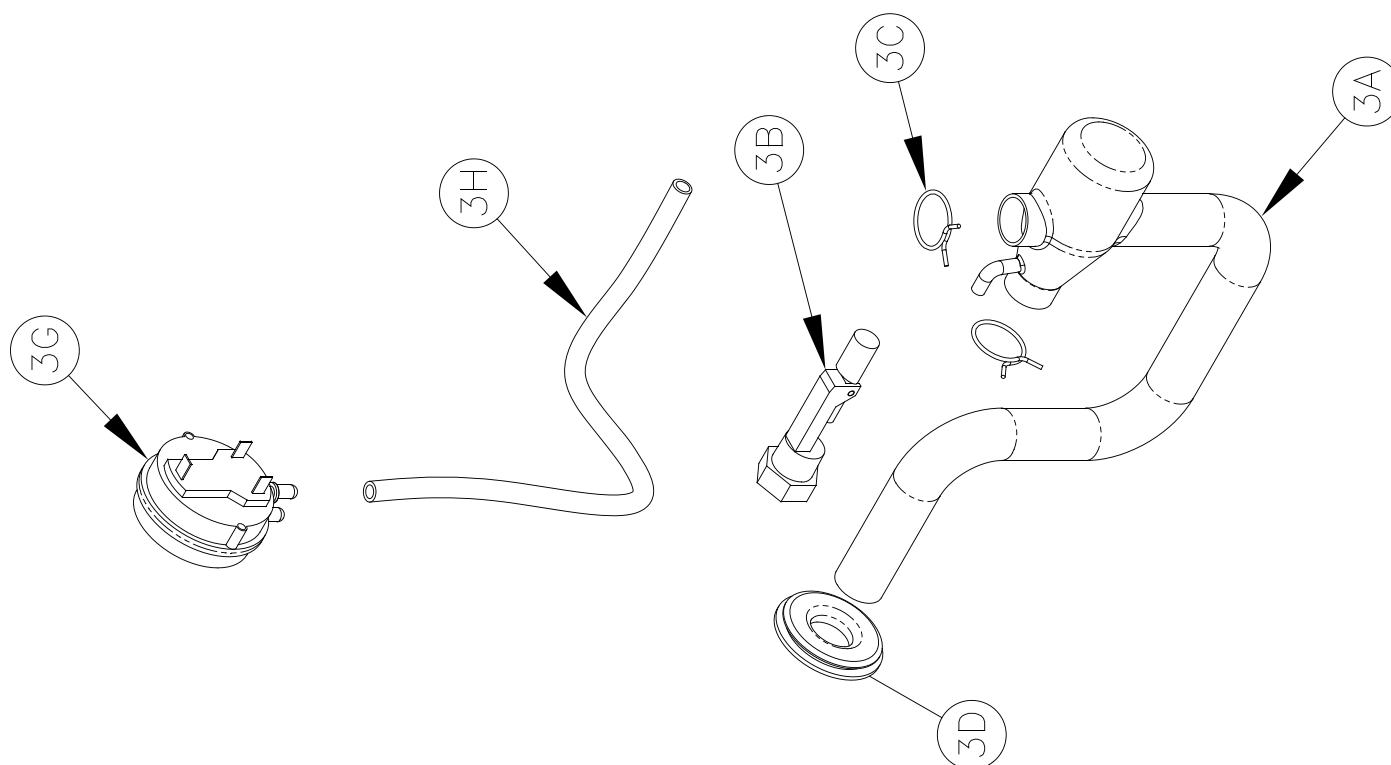
Blower / Gas Train Components						
Key No.	Description	Part Number				
		ALP399	ALP500	ALP600	ALP700	ALP800
2A	Replacement Blower Kit (includes blower, blower outlet gasket and hardware)	104999-01	104999-02	104999-03		
2B	Blower Outlet Gasket	101345-01	102614-01	103263-01		
2C	Blower Inlet Assembly (includes gas orifice, injector flange, inlet shroud (399 and 500 only), swirl plate, blower adapter plate, and mounting hardware)	101704-04	101704-05	Natural Gas: 105001-01	Natural Gas: 105001-02	103223-01
				LP Gas: 105000-01	LP Gas: 105000-02	
2D	Blower Inlet Replacement Kit (includes swirl plate, blower adapter plate, and mounting hardware)	104620-04	104620-05	N/A	N/A	N/A
2E	Replacement Gas Valve Kit (includes one gas valve and o-rings)	105004-01	105004-02	Natural Gas: 105004-04		
				LP Gas: 105004-03		
2F	Gas Valve Flange Kit (includes one 90° gas valve flange, o-ring, and hardware)	N/A	102972-03			
2G	Gas Valve Wire Harness (includes harness with plug and M4 x 30 mm screw)	102971-01		Natural Gas: 103225-01		
				LP Gas: 103300-01		
2H	Gas Line Rubber Grommet	3/4 in. NPT: 101638-01		1 in. NPT: 103252-01		
2J	Gas Shutoff Valve	3/4 in. NPT: 101615-01		1 in. NPT: 816SOL0015		

### XIII. Repair Parts (continued)

ALP600, ALP700 and ALP800  
(ALP800 shown)

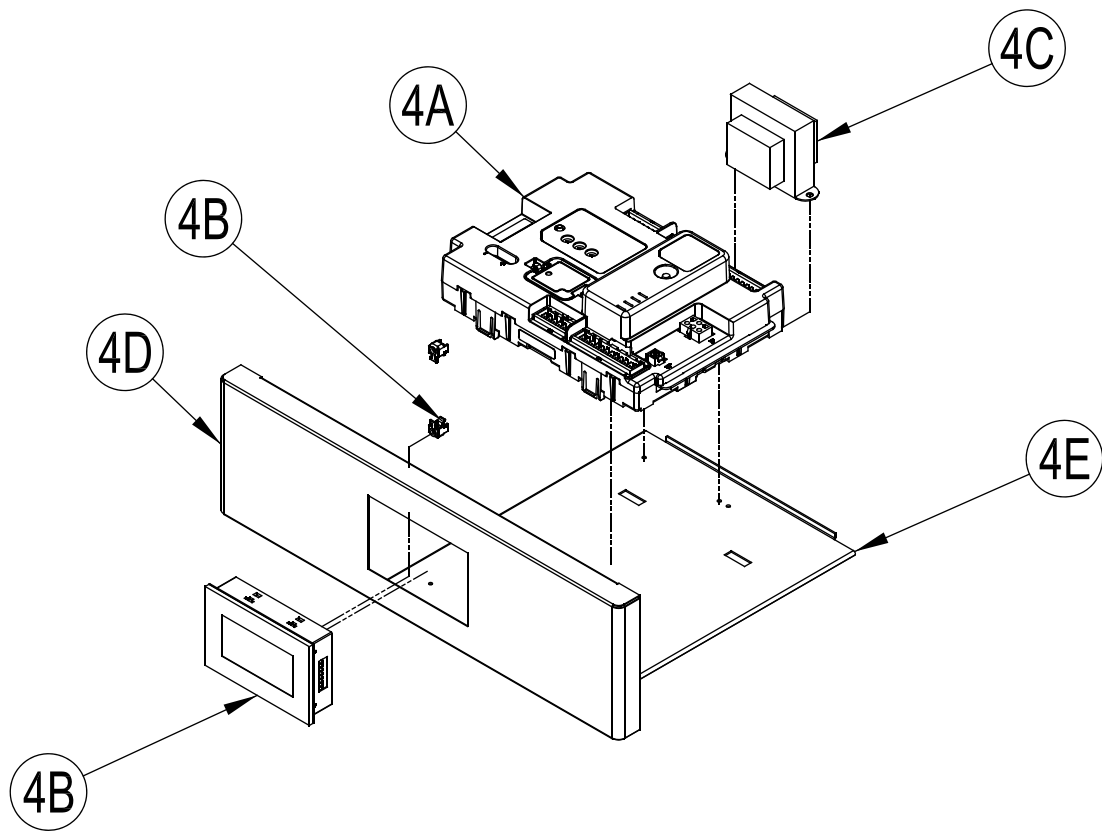


### XIII. Repair Parts (continued)



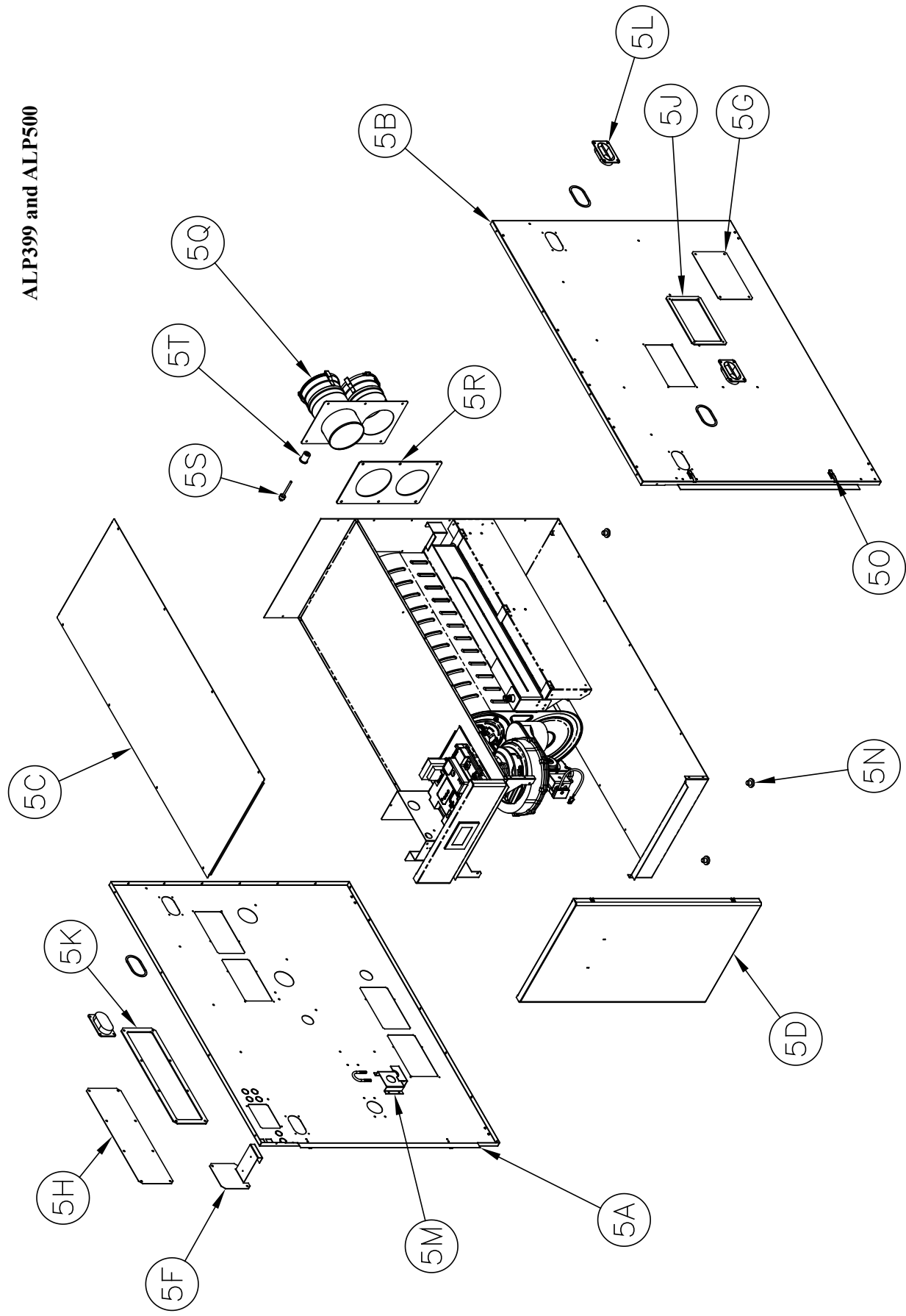
Condensate Trap and Related Components						
Key No.	Description	Part Number				
		ALP399	ALP500	ALP600	ALP700	ALP800
3A	Replacement Condensate Trap Kit (includes trap, float switch, grommet, coupling, and clamps)	104704-01		105006-01		104704-01
3B	Replacement Condensate Float Switch Kit (includes float switch and clamp)	105005-01				
3C	Spring Hose Clamp, 15/16 in. OD hose	101632-01				
3D	Rubber Grommet, Condensate Trap	101595-01				
3E	Condensate Neutralizer Kit (not shown, includes limestone chips)	101867-01				
3F	Limestone Chips, 2 lb. bag (not shown)	101873-01				
3G	Air Pressure Switch	104426-01				
3H	Air Pressure Switch Tubing, Silicone, 3/16 in. ID x 0.07 in. Wall Thickness	13.5 in. 7016041	22 in. 102770-01	24 in. 104658-01		28 in. 103257-01

# XIII. Repair Parts (continued)



Control Components						
Key No.	Description	Part Number				
		ALP399	ALP500	ALP600	ALP700	ALP800
4A	Replacement Sage2.1 Control (programmed)	104472-01	104472-04	Natural Gas: 105008-02 LP Gas: 105008-01		104472-04
4B	Replacement Display (programmed, includes mounting hardware)	104779-01				
4C	Transformer	102516-01		103193-01		
4D	Upper Front panel	102778-01				
4E	Control Slide Out Tray	103336-01				

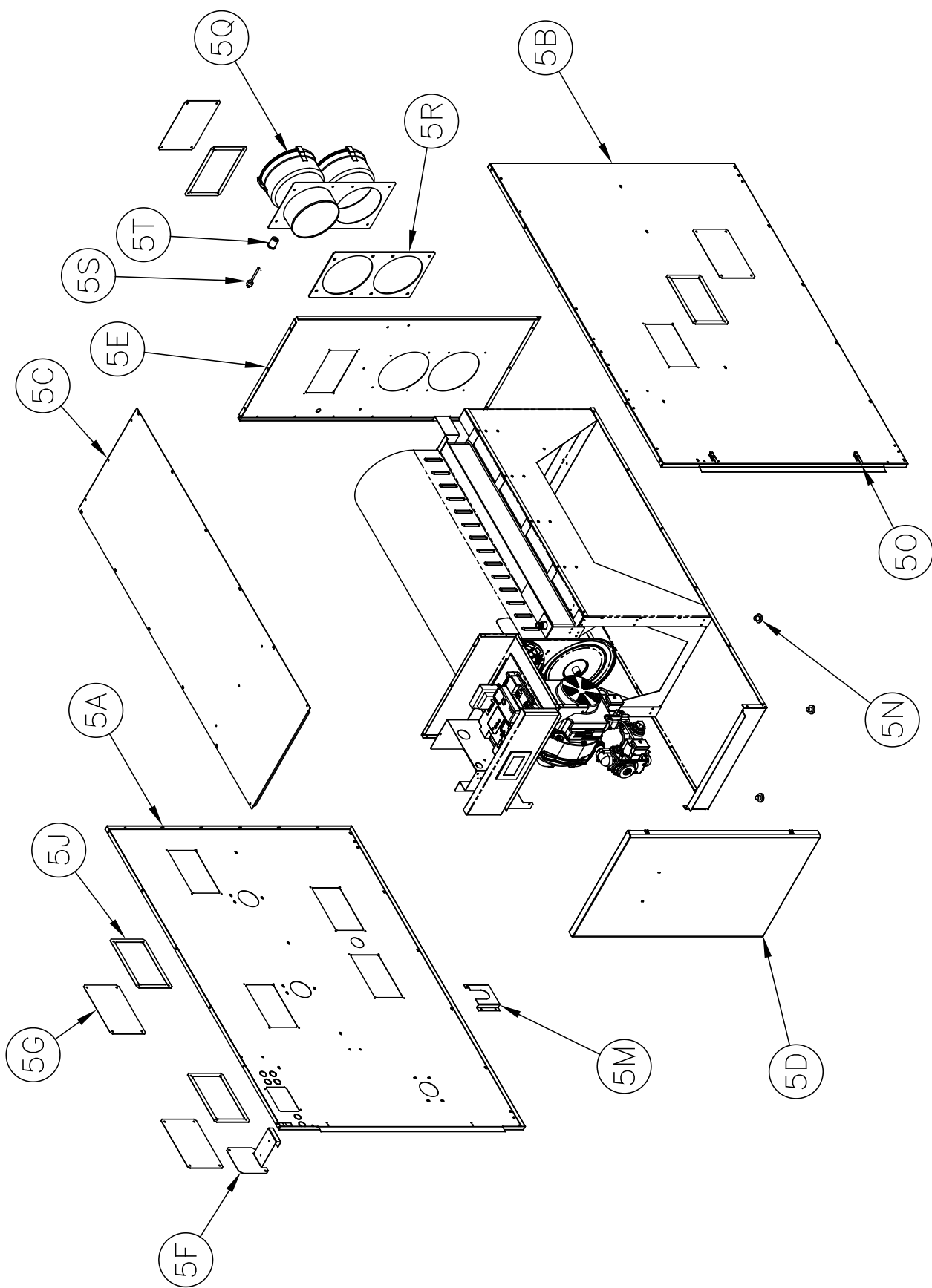
ALP399 and ALP500



### XIII. Repair Parts (continued)

Sheet Metal, ALP399 and ALP500			
Key No.	Description	Part Number	
		ALP399	ALP500
5A	Replacement Left Side Panel Kit (includes labels, access panels, grommets and header gaskets)	105017-01	105017-02
5B	Replacement Right Side Panel Kit (includes labels, access panels and gaskets)	105018-01	105018-02
5C	Replacement Top Panel Kit (includes labels)	105019-01	105019-02
5D	Replacement Front Door Kit (includes labels)	105016-01	105016-02
5E	Replacement Rear Panel Kit (includes access panel and gaskets)	N/A	
5F	High Voltage Terminal Bracket	102780-01	
5G	Replacement Access Panel Kit, 5 in. x 8 in. (includes gasket)	105010-01	
5H	Replacement Access Panel Kit, 5 in. x 16 in. (includes gasket)	N/A	105011-01
5J	Access Panel Gasket, 5 in. x 8 in.	102877-01	
5K	Access Panel Gasket, 5 in. x 16 in.	N/A	102613-01
5L	Replacement Handle Kit (includes gasket)	105015-01	
5M	Gas Train Bracket	N/A	102611-01
5N	Nylon Glide Replacement Kit (includes 6 glides)	105014-01	
5O	Replacement Door Latch Kit (includes rivets)	105012-01	
5P	Replacement Stacking Bracket Kit (not shown, includes 4 brackets and hardware)	105022-01	
5Q	CPVC/PVC Vent System Connector Replacement Kit (includes gasket and flue temperature sensor cap)	4 in. x 4 in. 105021-01	
5R	CPVC/PVC Vent System Connector Gasket	4 in. x 4 in. 102185-02	
5S	Flue Temperature Sensor Replacement Kit (includes sensor and cap)	105013-01	
5T	Flue Temperature Sensor Cap	105027-01	

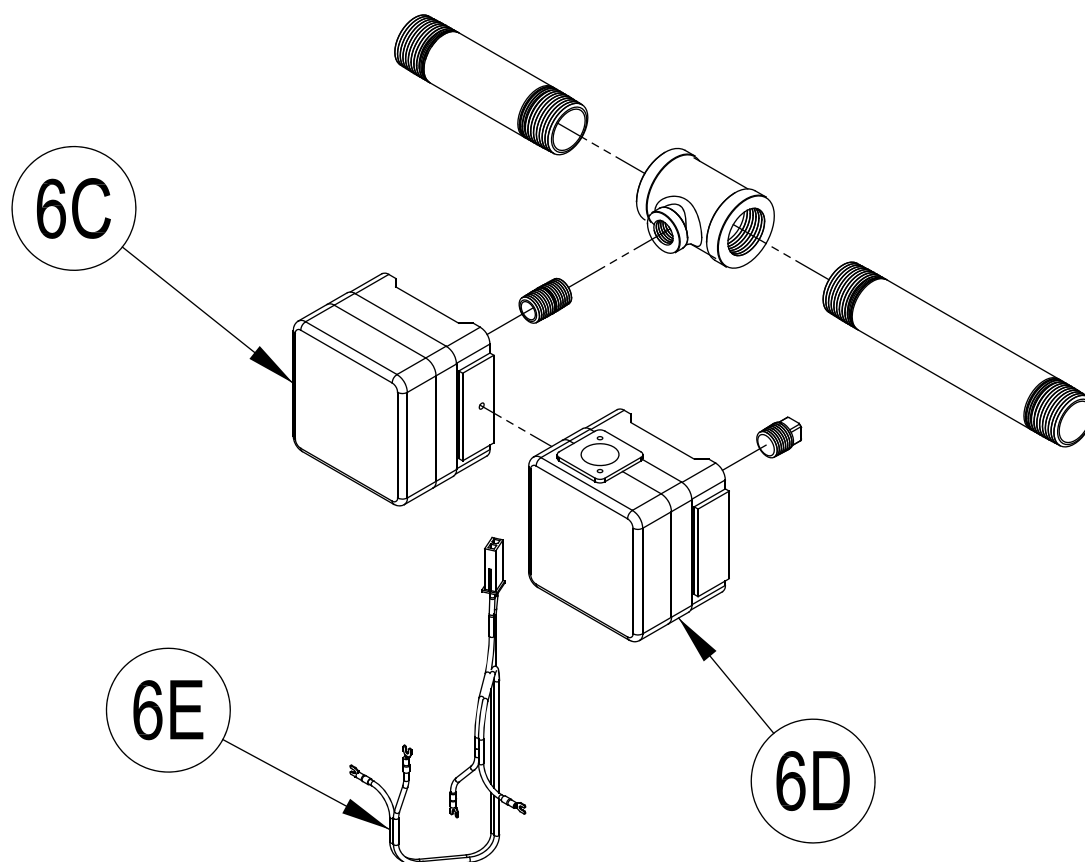
## ALP600, ALP700 and ALP800



### XIII. Repair Parts (continued)

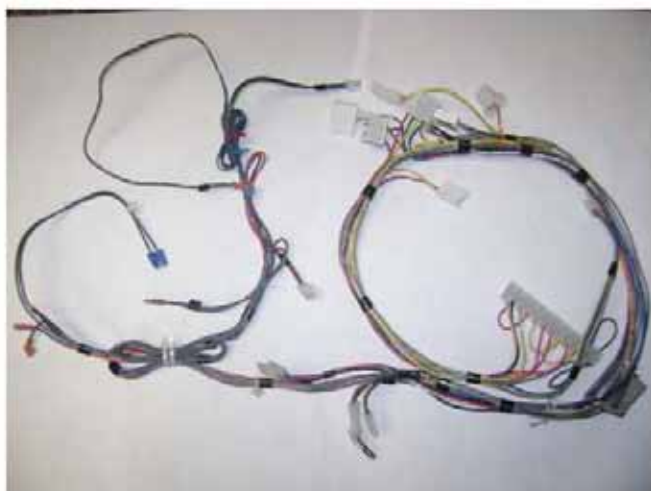
Sheet Metal, ALP600, ALP700 and ALP800				
Key No.	Description		Part Number	
		ALP600	ALP700	ALP800
5A	Replacement Left Side Panel Kit (includes labels, access panels, grommets and header gaskets)	105017-03		105017-04
5B	Replacement Right Side Panel Kit (includes labels, access panels and gaskets)	105018-03		105018-04
5C	Replacement Top Panel Kit (includes labels)	105019-03		105019-04
5D	Replacement Front Door Kit (includes labels)	105016-02		
5E	Replacement Rear Panel Kit (includes access panel and gaskets)	105020-01	105020-02	
5F	High Voltage Terminal Bracket	102780-01		
5G	Replacement Access Panel Kit, 5 in. x 8 in. (includes gasket)	105010-01		
5H	Replacement Access Panel Kit, 5 in. x 16 in. (includes gasket)	N/A		
5J	Access Panel Gasket, 5 in. x 8 in.	102877-01		
5K	Access Panel Gasket 5 in. x 16 in.	N/A		
5L	Replacement Handle Kit (includes gasket)	N/A		
5M	Gas Train Bracket	103240-01		
5N	Nylon Glide Replacement Kit (includes 6 glides)	105014-01		
5O	Replacement Door Latch Kit (includes rivets)	105012-01		
5P	Replacement Stacking Bracket Kit (not shown, includes 4 brackets and hardware)	105022-01		
5Q	CPVC/PVC Vent System Connector Replacement Kit (includes gasket and flue temperature sensor cap)	6 in. x 6 in. 105021-02		
5R	CPVC/PVC Vent System Connector Gasket	6 in. x 6 in. 103248-01		
5S	Flue Temperature Sensor Replacement Kit (includes sensor and cap)	105013-01		
5T	Flue Temperature Sensor Cap	105027-01		

### XIII. Repair Parts (continued)



Additional Components						
Key No.	Description	Part Number				
		ALP399	ALP500	ALP600	ALP700	ALP800
6A	CSD-1 Kit (not shown, includes manual reset high limit, immersion well, gas pressure switches, and hardware)		104780-01			
6B	Gas Pressure Switch Assembly	N/A	102670-01			
6C	Low Gas Pressure Switch	N/A	102702-01			
6D	High Gas Pressure Switch	N/A	102703-01			
6E	Gas Pressure Switch Wire Harness	N/A	102704-01			
6F	Flow Switch Kit (not shown, includes switch and paddles)	104927-01				
6G	Flow Switch Repair Paddle Kit (not shown, includes paddles and hardware)	104926-01				
6H	Outdoor Temperature Sensor (not shown)	102946-01				
6J	Header Sensor for Direct Immersion, 1/2 in. NPT (not shown)	101935-01				
6K	Header Sensor Kit (not shown, includes mounting hardware)	103104-01				
6L	30 in. Long Schedule 40 CPVC Pipe (not shown)	4 in. 102193-02		6 in. 103267-01		
6M	Schedule 80 CPVC 90° Elbow (not shown)	4 in. 102192-02		6 in. 103268-01		
6N	Rodent Screen (not shown)	4 in. 102191-02		6 in. 102191-03		

### XIII. Repair Parts (continued)



10A



10B



10C



10D



10E



10F

Key No.	Description	Wiring Harnesses				
		Part Number				
		ALP399	ALP500	ALP600	ALP700	ALP800
---	Complete Wiring Harness (includes 10A, 10B, 10C & 10D)			102701-02		
10A	Main (Low Voltage) Harness			103009-02		
10B	High Voltage Harness			103010-02		
10C	Blower Power Harness			103012-01		
10D	Communication Harness			103011-01		
10E	Igniter Harness			103486-01		
10F	Wiring Harness, Thermal Link and Burner Door Thermostat			104574-01		